

Frome heat network area

Vattenfall is preparing to construct the Frome heat network area.

This network will bring low carbon heating right to the heart of the city centre, passing iconic landmarks that makes Bristol, Bristol!

The [Bristol City Leap](#) partnership between Bristol City Council, Ameresco and Vattenfall will accelerate investment in Bristol to help meet the city's ambition to be carbon neutral by 2030. Vattenfall is responsible for expanding the city's existing heat network and developing new network areas, with the goal to interconnect them to serve the city with reliable, low carbon heat.

About Vattenfall

[Vattenfall](#) owns and operates the Bristol heat network. Three network areas are already in operation in Redcliffe, Old Market and Bedminster.

Vattenfall brings investment and unrivalled know-how to design and deliver a large-scale, resilient heat network that supplies low carbon heat, creates jobs and boosts the local economy in Bristol.

Vattenfall is currently supplying heat and hot water to Bristol customers, with over 6,000 homes equivalent being serviced. Vattenfall is also expanding heat networks in Temple, Bedminster and Redcliffe to support new residential and commercial developments.

Frequently Asked Questions (FAQs) relating to the Frome heat network area are below. If you have a question that isn't answered here, please send them to bristol.enquiries@vattenfall.com

About the Frome heat network area

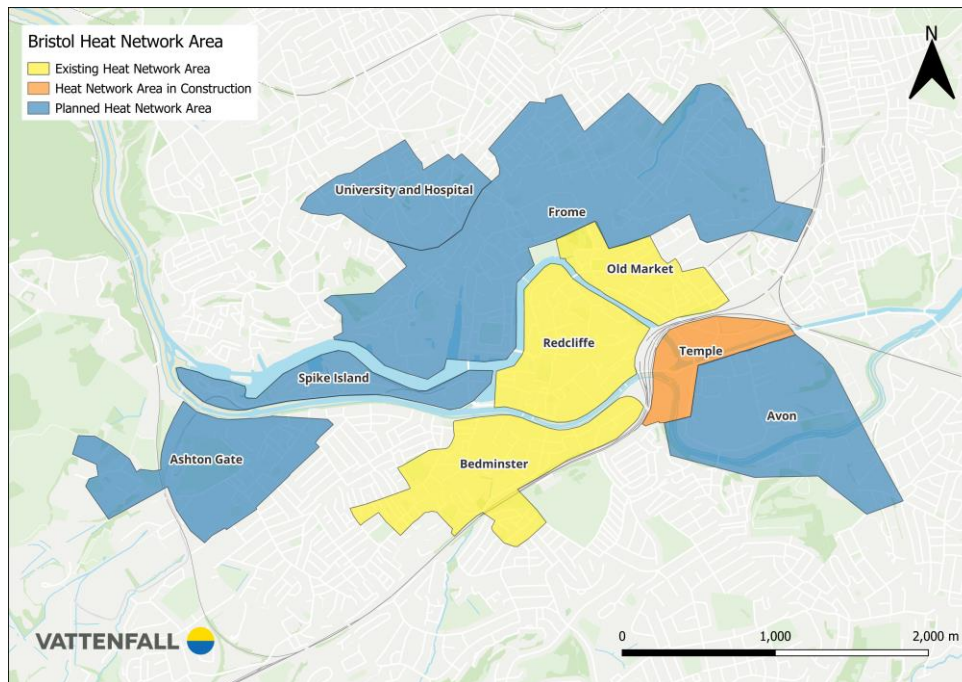
Please note, this is a live infrastructure project and exact timings are subject to change. All information provided below is estimated and accurate dates for works will be communicated when available.

What is the Frome heat network area?

The Frome heat network is the most ambitious and exciting heat network area to be planned for Bristol. It will be the largest new heat network area constructed as we expand the Bristol heat network to be city-scale.

Where is the Frome heat network area?

The Frome heat network area will stretch from Cabot Circus to Millenium Square. The map below highlights the area where the new heat network could supply low carbon heating and hot water to buildings.



Why are you building the Frome heat network area?

We are bringing the Bristol heat network to the city centre to supply new residential and commercial developments with heating and hot water. This will significantly reduce reliance on fossil fuels and contribute to Bristol City Council's decarbonisation targets.

When will construction begin?

Before construction begins, we will be surveying potential routes for the heat network pipes over the summer months 2025. Subject to the results of the surveys, construction could start in winter 2025; if so, it will be expected to finish by winter 2027. Whilst exact timings are still to be determined, we will ensure affected stakeholders are informed as soon as we're able to do so.

Who is connecting to the Frome heat network area?

The Frome heat network will initially support the new buildings being developed as part of the Frome Gateway Regeneration Project, plus developers who are building new residential and commercial buildings in the city centre.

How is heat being generated?

We will generate heat and hot water using energy centres. To support the Frome heat network area, we will be building new permanent low carbon energy centres using heat pump technology. Potential locations have been identified in the Frome Gateway Masterplan. The consultation documents can be found [here](#).

What will the impact on local residents and businesses be?

The installation of the Frome heat network area will cause some highway disruption within the city centre. As far as possible, we will work with Bristol City Council to plan our works alongside highway improvement schemes to minimise disruption. For residents or businesses located on the heat network route, we will contact you ahead of any works with more information.

May 2025, Frome network area – FAQs

Please note, this is a live infrastructure project and exact timings are subject to change. All information provided in this document is estimated, and accurate dates for works will be communicated as and when possible.

Do you have planning permission to build the Frome heat network area?

The installation of the Frome heat network area is permitted under Bristol City Council's Local Development Order. This was put in place in 2023 shortly after the launch of Bristol City Leap to support the city's climate goals and to decarbonise its energy infrastructure.

For each section of the heat network that is installed underground, we will apply for the additional permissions required from stakeholders such as Bristol City Council Highways and the Environment Agency.

Are there plans to connect individual houses onto the Frome network?

The feasibility of connecting existing residential homes to a heat network is something the UK as a whole is still working on. In line with Bristol City Council's planning policy, our immediate focus is connecting new developments (residential and commercial) to the Bristol heat network.

We are exploring pilot projects for connecting existing homes locally to demonstrate technical and economic viability. If you're interested in being involved in a pilot project, please email bristolbusdev@vattenfall.com.

How can residents benefit?

The Bristol heat network is a critical component of the city's decarbonisation plan; it will provide low carbon heating and hot water to the equivalent of 12,000 local buildings by 2030. Whilst we expand the Bristol heat network, we have committed to deliver additional benefits to the community.

As part of Bristol City Leap, we will deliver a combined social value package of more than £61 million. This includes supporting local skills and career development initiatives, encouraging and funding community energy projects and boosting the local economy by using local businesses in our supply chain. Find out more about our social value activities in Bristol [here](#).

About heat networks

A heat network (also known as district heating) is a system of insulated pipes that transports heat from centralised sources to multiple buildings, where it is used to provide heating and hot water to residents and businesses in each building.

For a heat network to maximise its potential, it provides heating and hot water (and in some cases cooling) to all the properties connected to it. They offer a more efficient way of heating by using a larger central heating source instead of lots of small individual heating systems. Buildings connected to the heat network benefit from an all-inclusive service, as repairs and maintenance are all included.

In Bristol, Vattenfall currently only provides heat to the building boundary, which means the building owner is the customer. The building owner then supplies the heating and hot water we provide to the occupants of the building, which can be resident or a business.

As part of the Bristol City Leap concession agreement, we have committed to fair and transparent pricing, benchmarked against a comparison to the costs of an individual air source heat pump, with tariffs made publicly available. The heat network will also be regulated by the energy regulator Ofgem within a year.

More information can be found on our website: [What is a heat network? - Vattenfall Heat UK](#).

We hope this document has been helpful in providing information about upcoming activity on the Frome heat network area. Please reach out to us if you have specific questions at: bristol.enquiries@vattenfall.com.

May 2025, Frome network area – FAQs

Please note, this is a live infrastructure project and exact timings are subject to change. All information provided in this document is estimated, and accurate dates for works will be communicated as and when possible.